



# Gatwick Airport Northern Runway Project

Environmental Statement

Appendix 5.3.2: Code of Construction Practice Annex 6 – Outline

Arboricultural and Vegetation Method Statement – Part 5 - Tracked Version

**Book 5**

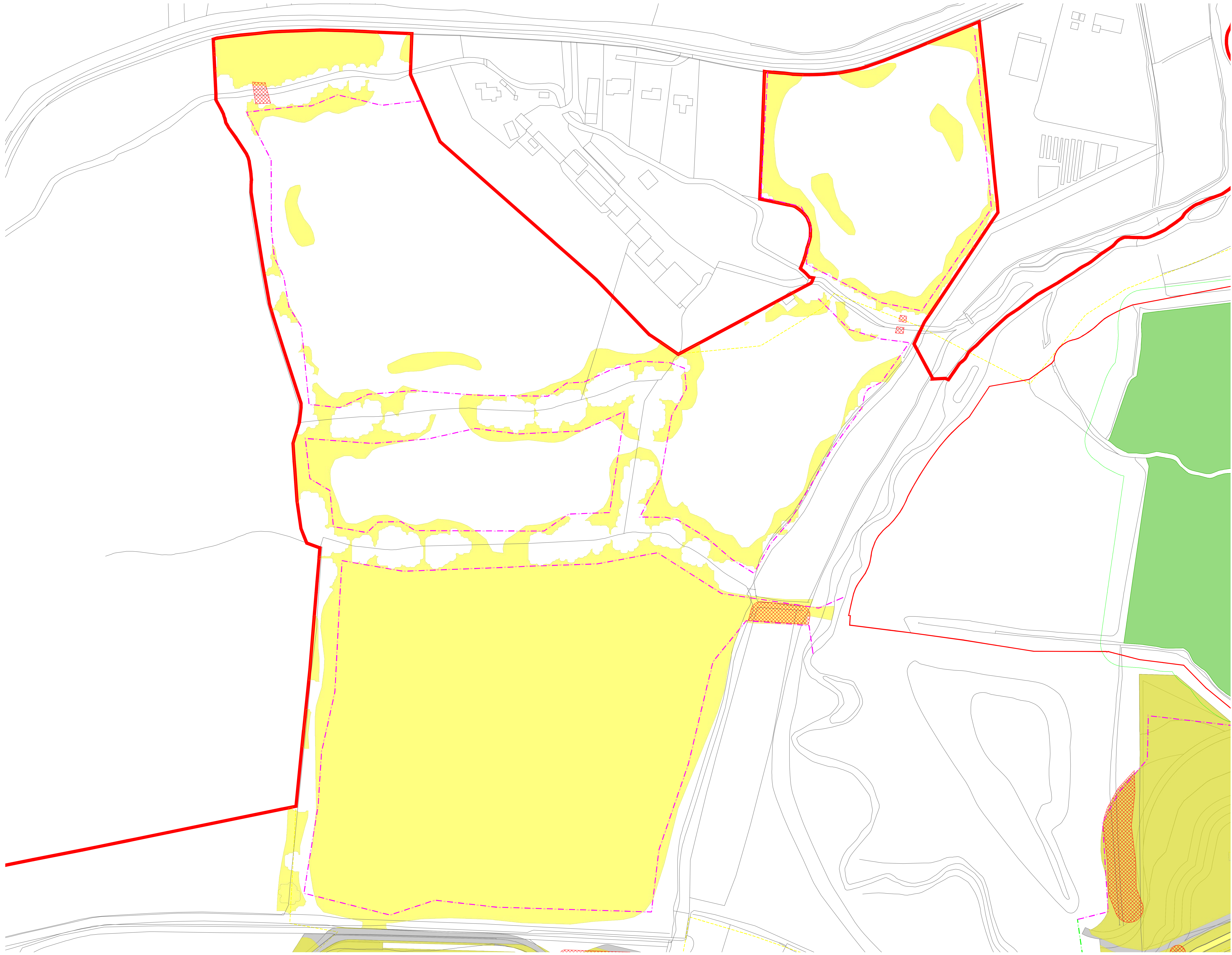
VERSION: 4.0

DATE: JULY 2024

Application Document Ref: 5.3

PINS Reference Number: TR020005

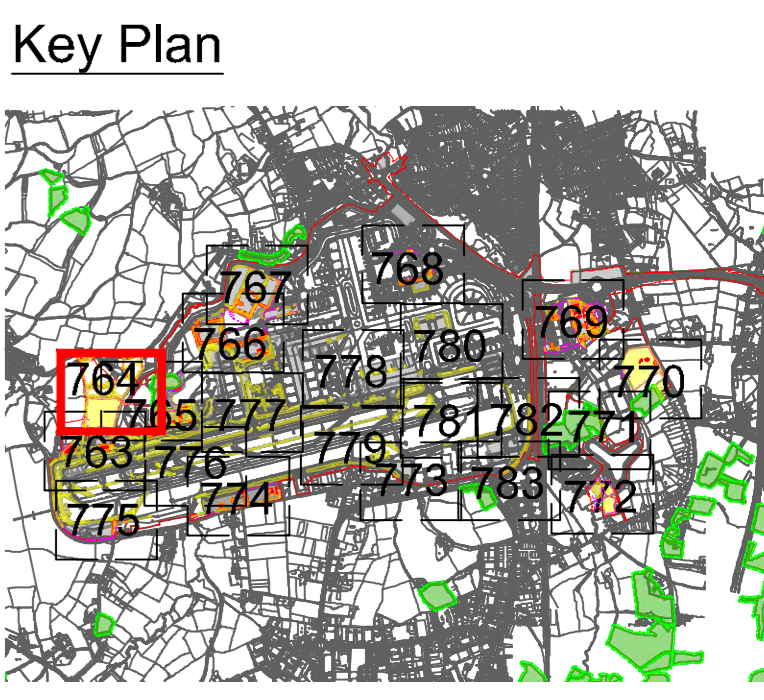




- Key**
- Site Boundary
  - Survey boundary
  - Projected Tree Loss (Worst Case Scenario)
  - Projected Vegetation Loss (Worst Case Scenario)
  - Indicative Scheme Layout
  - Indicative temporary protective fencing in accordance with Section 6.2 - BS5837:2012. See below for example barriers.
  - Indicative secondary protective Hi-Viz Mesh fence in accordance with Section 6.2 - BS5837:2012. See below for example barriers.
  - Indicative vegetation protection fence line. Design and location to be agreed by local council during detail design.
  - Designated Ancient Woodland (as per Natural England project woodland inventory, via open data publication)
  - Ancient Woodland tree buffer (15m offset) (as per standing advice produced by Forestry England and Natural England)

**NOTES**

- Refer to ES Appendix 6.5.1: See Survey Report and Arboriculture Impact Assessment for further details.
- Some trees or a small proportion from the ground and is not marked as a tree in the vegetation inventory.
- Plan produced in accordance with recommendations set out in ES 6.07-6.10 in relation to tree removal and preservation.
- Survey based upon Aerial Photography and trees located by eye.



**DOCUMENT**

**Environmental Statement**

**DRAWING TITLE**  
**Airport Preliminary Vegetation Removal & Protection Plans**  
**Appendix 5.3.2 Annex 6**  
**Sheet 2 of 21**

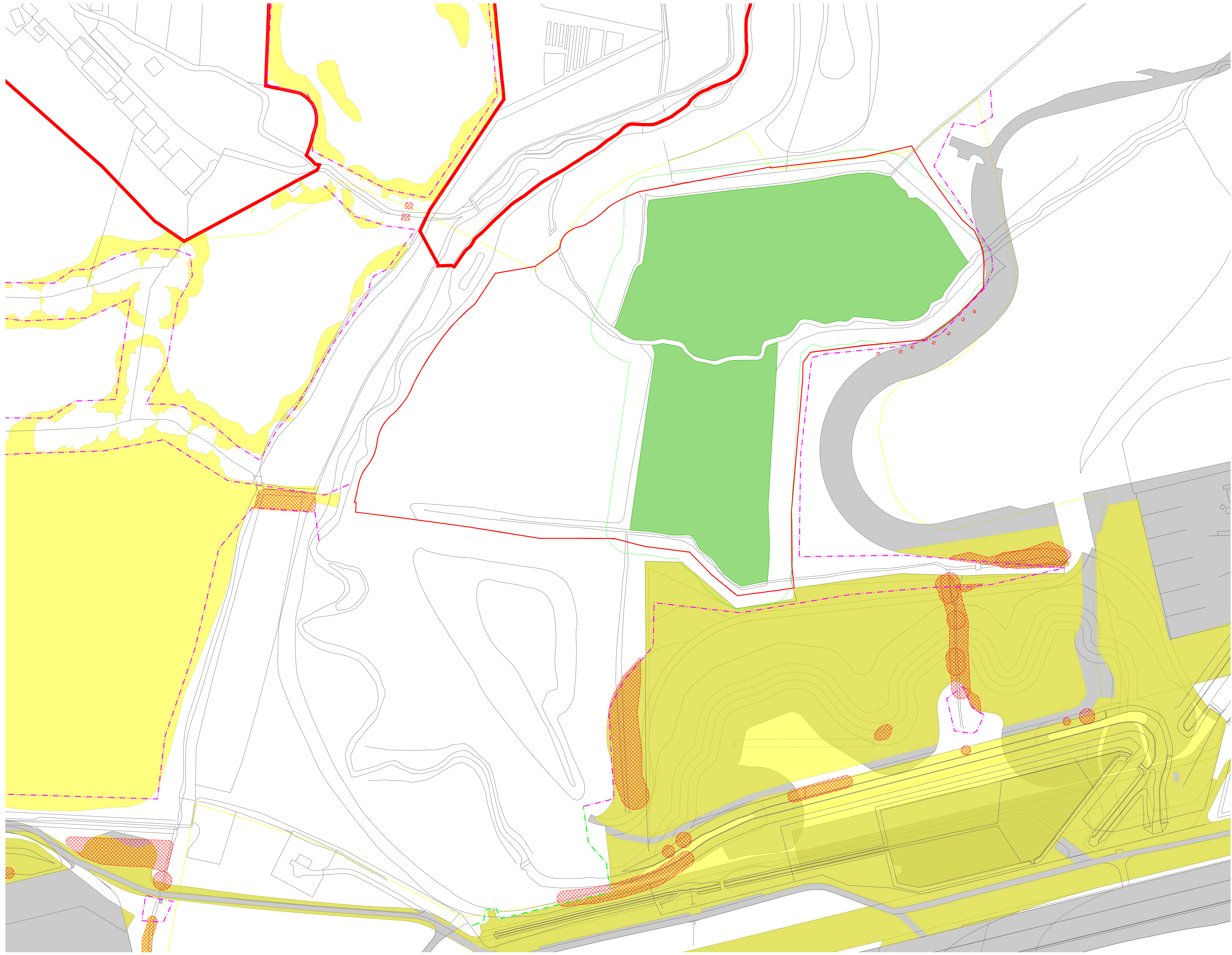
**DATE**  
**June 2024**

<b>ORIENTATION</b> N	<b>DRAWING NO.</b> 764	<b>REVISION</b> For ES Issue
	<b>DRAWN BY</b> RC	<b>PIA / CHECKED BY</b> DC

**SCALE @ A0**  
0m 25m 50m

Reproduced from Ordnance Survey map with the permission of Ordnance Survey on behalf of the controller of Her Majesty's Stationery Office © Crown Copyright (2023). Licence number 6100031673, 10001998, 10004892.  
© Copyright 2023 Gatwick Airport Limited. No part of this drawing is to be reproduced without prior permission of Gatwick Airport Limited.

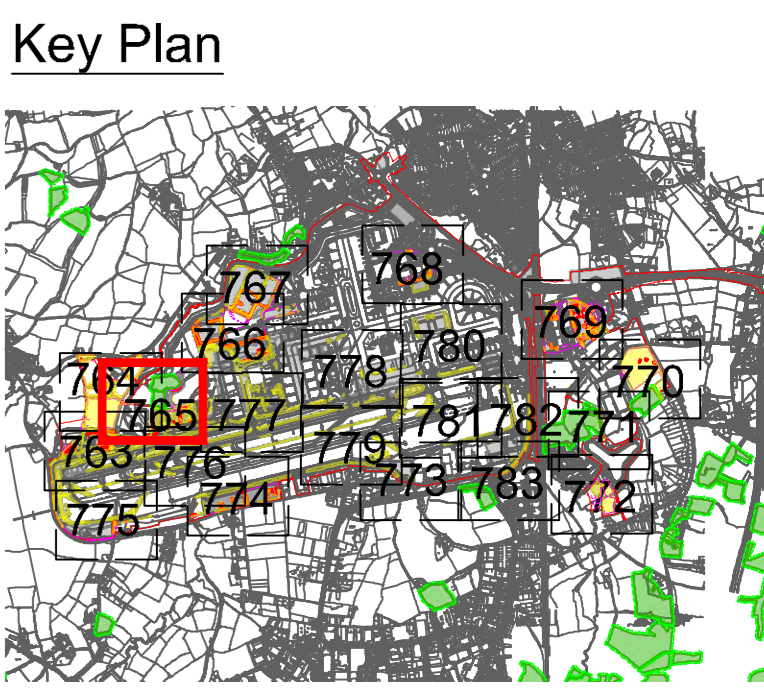




- Key**
- Site Boundary
  - Survey boundary
  - Projected Tree Loss (Worst Case Scenario)
  - Projected Vegetation Loss (Worst Case Scenario)
  - Indicative Scheme Layout
  - Indicative temporary protective fence/line in accordance with Section 6.2.2 - BS5837:2012. See below for example barriers.
  - Indicative secondary protective Hi-Viz Mesh fence/line in accordance with Section 6.2.2 - BS5837:2012. See below for example barriers.
  - Indicative vegetation protective fence/line. Design and location to be agreed by local council during detail design.
  - Designated Ancient Woodland (as per Natural England ancient woodland inventory, via open data publication)
  - Ancient Woodland tree buffer (15m offset) (as per planning advice produced by Forestry England and Natural England)

**NOTES**

- Refer to ES Appendix 6.10.1: Tree Survey Report and Ancillary Impact Assessment for further details.
- Some trees of cultural importance from the ground and are not included in the aerial photograph.
- Plans produced in accordance with recommendations set out in BS 5837:2012 - Trees in Relation to Buildings and Construction.
- Survey based upon Aerial Photography and trees located by eye.



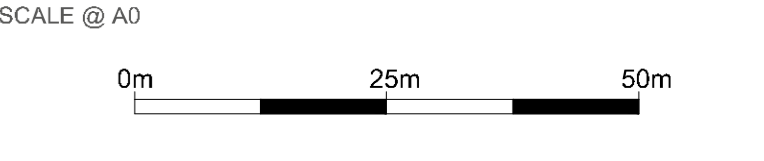
**DOCUMENT**

**Environmental Statement**

**DRAWING TITLE**  
**Airport Preliminary Vegetation Removal & Protection Plans**  
**Appendix 5.3.2 Annex 6**  
**Sheet 3 of 21**

**DATE**  
**June 2024**

N ▲	<b>DRAWING NO.</b> 765	<b>REVISION</b> For ES Issue
	<b>DRAWN BY</b> RC	<b>PIA / CHECKED BY</b> DC



Reproduced from Ordnance Survey map with the permission of Ordnance Survey on behalf of the controller of Her Majesty's Stationery Office © Crown Copyright (2023). Licence number 0100031073, 10004892, 10004892.  
 © Copyright 2023 Gatwick Airport Limited. No part of this drawing is to be reproduced without prior permission of Gatwick Airport Limited.

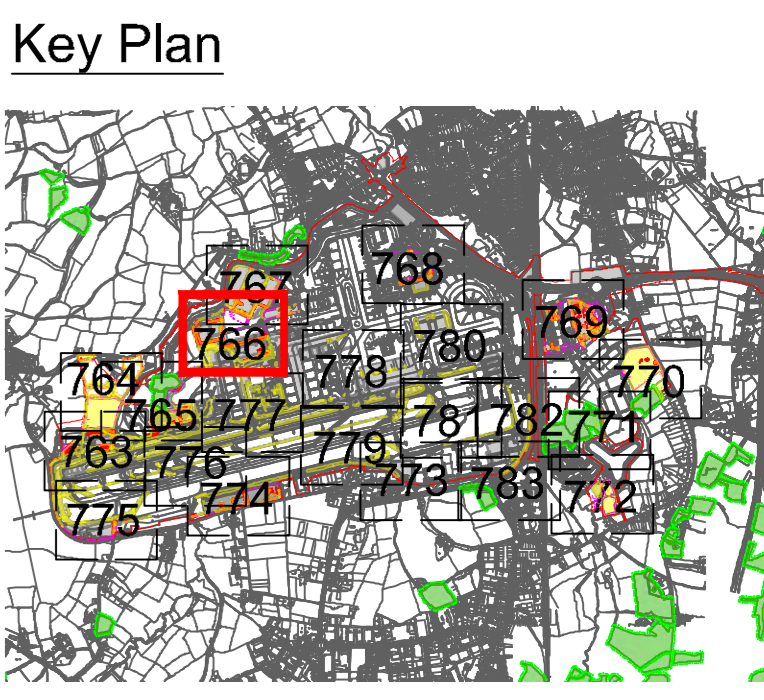




- Key**
- Site Boundary
  - Survey boundary
  - Projected Tree Loss (Worst Case Scenario)
  - Projected Vegetation Loss (Worst Case Scenario)
  - Indicative Scheme Layout
  - Indicative temporary protective fencing in accordance with Section 6.2, BS6857:2012. See below for example barriers.
  - Indicative secondary protective Hi-Viz Mesh fence in accordance with Section 6.2, BS6857:2012. See below for example barriers.
  - Indicative vegetation protective fencing. Design and location to be agreed by local council during detail design.
  - Designated Ancient Woodland (as per Natural England project woodland inventory, via open data publication)
  - Ancient Woodland tree buffer (15m offset) (as per standing advice produced by Forestry England and Natural England)

**NOTES:**

- Refer to ES Appendix 6.5.1: See Survey Report and Arboriculture Impact Assessment for further details.
- Some trees or a small proportion from the ground and is not marked as a tree in the aerial photograph.
- Plans produced in accordance with recommendations set out in BS 6857:2012 'Tree in Relation to Highways, Open Spaces and Construction'.
- Surveys based upon Aerial Photography and trees located by eye.

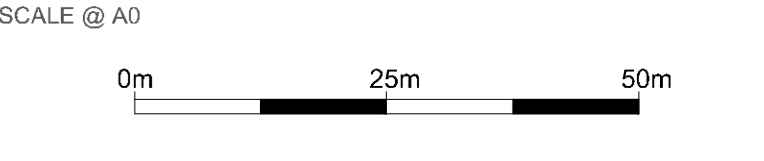


**Environmental Statement**

DRAWING TITLE  
**Airport Preliminary Vegetation Removal & Protection Plans**  
 Appendix 5.3.2 Annex 6  
 Sheet 4 of 21

DATE  
**June 2024**

ORIENTATION	DRAWING NO.	REVISION
N	766	For ES Issue
	DRAWN BY	PIA / CHECKED BY
	RC	DC



Reproduced from Ordnance Survey map with the permission of Ordnance Survey on behalf of the controller of Her Majesty's Stationery Office © Crown Copyright (2023). Licence number 6100031673, 100048492.  
 © Copyright 2023 Gatwick Airport Limited. No part of this drawing is to be reproduced without prior permission of Gatwick Airport Limited.



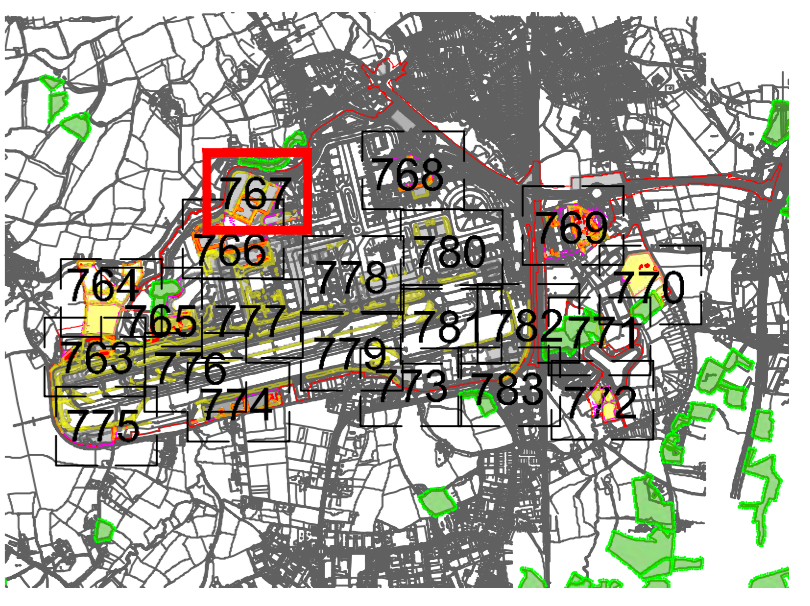


- Key**
- Site Boundary
  - Survey boundary
  - Projected Tree Loss (Worst Case Scenario)
  - Projected Vegetation Loss (Worst Case Scenario)
  - Indicative Scheme Layout
  - Indicative temporary protective fencing in accordance with Section 6.2 - BS5837:2012. See below for example barriers.
  - Indicative secondary protective Hi-Via Mesh fencing in accordance with Section 6.2 - BS5837:2012. See below for example barriers.
  - Indicative vegetation protective fencing. Design and location to be agreed by local council during detail design.
  - Designated Ancient Woodland (see per Natural England project woodland inventory, via open data publication)
  - Ancient Woodland tree buffer (15m offset) (see per standing advice produced by Forestry England and Natural England)

**NOTES**

- Refer to ES Appendix 6.5.1: See Survey Report and Arboriculture Impact Assessment for further details.
- Some trees are a root inspection from the ground and are not marked as such in this plan.
- Plans produced in accordance with recommendations set out in ES 6.07-6.09 - Trees in Relation to Highways, Open Spaces and Groundwater.
- Surveys based upon Aerial Photography and trees located by eye.

**Key Plan**



**DOCUMENT**

**Environmental Statement**

**DRAWING TITLE**

**Airport Preliminary Vegetation Removal & Protection Plans Appendix 5.3.2 Annex 6 Sheet 5 of 21**

**DATE**

**June 2024**

ORIENTATION N ▲	DRAWING NO.	REVISION
	767	For ES Issue
	DRAWN BY	PIA / CHECKED BY
	RC	DC

**SCALE @ A0**





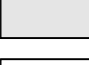
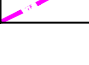
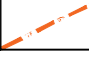
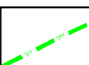


0m 25m 50m

Reproduced from Ordnance Survey map with the permission of Ordnance Survey on behalf of the controller of Her Majesty's Stationery Office © Crown Copyright (2023). Licence number 6100031673, 10004898, 10004892.

© Copyright 2023 Gatwick Airport Limited. No part of this drawing is to be reproduced without prior permission of Gatwick Airport Limited.

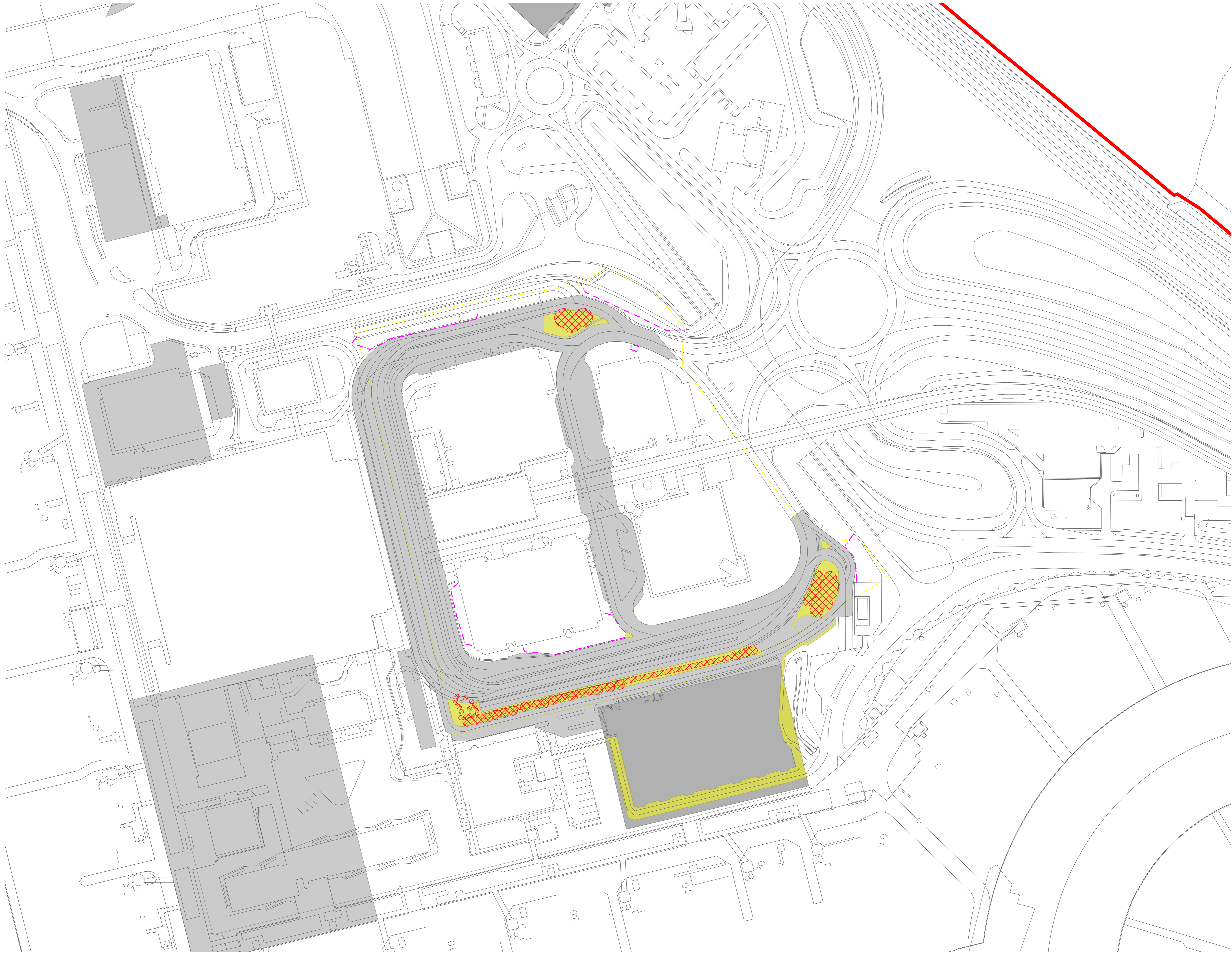


**Key**

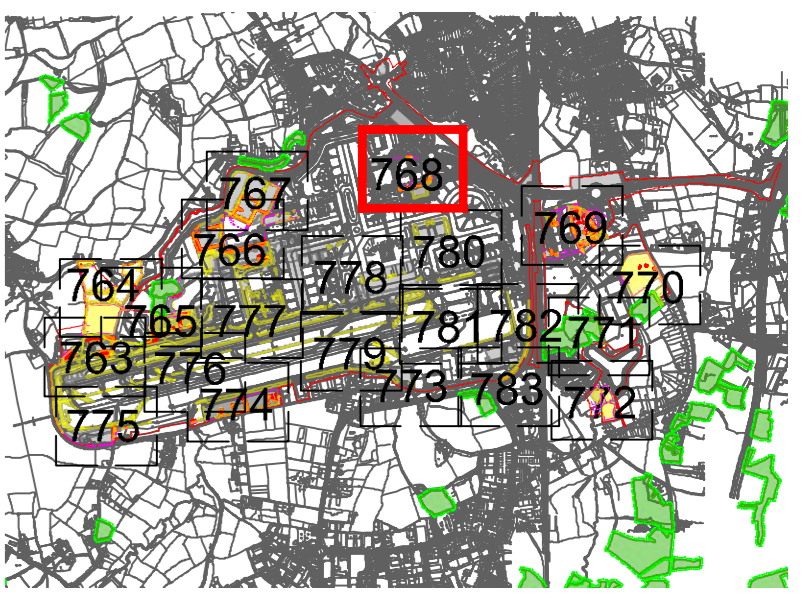
-  Site Boundary
-  Survey boundary
-  Projected Tree Loss (Worst Case Scenario)
-  Projected Vegetation Loss (Worst Case Scenario)
-  Indicative Scheme Layout
-  Indicative temporary protective fence/line in accordance with Section 8.2.2 BS5837:2012. See below for example barriers.
-  Indicative secondary protective H-Vis Mesh fence/line in accordance with Section 8.2.2 BS5837:2012. See below for example barriers.
-  Indicative vegetation protective fence/line: Design and location to be agreed by local council during detail design.
-  Designated Ancient Woodland (as per Natural England ancient woodland inventory - via open data publication)
-  Ancient Woodland tree buffer (15m offset) (as per planning advice produced by Forestry England and Natural England)

**NOTES**

- Refer to ES Appendix 8.10.1: Tree Survey Report and Ancillary Impact Assessment for further details.
- Survey based on a visual inspection from the ground and is not intended as a full aerial or satellite based survey.
- Plans produced in accordance with recommendations set out in BS 5837:2012 - Trees in Relation to Development and Construction.
- Survey based upon Aerial Photography and trees located by eye.



**Key Plan**



**DOCUMENT**

**Environmental Statement**

**DRAWING TITLE**

**Airport Preliminary Vegetation Removal & Protection Plans Appendix 5.3.2 Annex 6 Sheet 6 of 21**

**DATE**

**June 2024**

**ORIENTATION**



**DRAWING NO.**

**768**

**REVISION**

**For ES Issue**

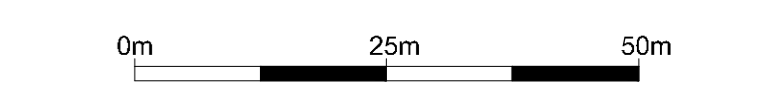
**DRAWN BY**

**RC**

**PIA / CHECKED BY**

**DC**

**SCALE @ A0**



Reproduced from Ordnance Survey maps with the permission of Ordnance Survey on behalf of the controller of Her Majesty's Stationery Office © Crown Copyright (2023). Licence number 0100031673, 100048492, 100048492.

© Copyright 2023 Gatwick Airport Limited. No part of this drawing is to be reproduced without prior permission of Gatwick Airport Limited.

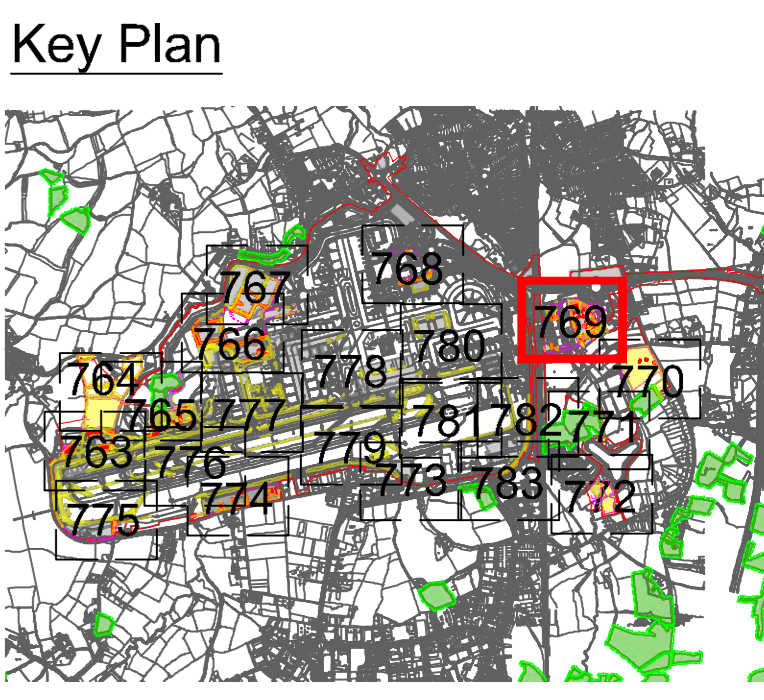




- Key**
- Site Boundary
  - Survey boundary
  - Projected Tree Loss (Worst Case Scenario)
  - Projected Vegetation Loss (Worst Case Scenario)
  - Indicative Scheme Layout
  - Indicative temporary protective fence/line in accordance with Section 8.2.2 BS5837:2012. See below for example barriers.
  - Indicative secondary protective H-Vis Mesh fence/line in accordance with Section 8.2.2 BS5837:2012. See below for example barriers.
  - Indicative vegetation protective fence/line. Design and location to be agreed by local council during detail design.
  - Designated Ancient Woodland (as per Natural England ancient woodland inventory - via open data publication)
  - Ancient Woodland tree buffer (15m offset) (as per planning advice produced by Forestry England and Natural England)

**NOTES**

- Refer to ES Appendix B 10.1: Tree Survey Report and Ancillary Impact Assessment for further details.
- Some trees are shown as cut stumps from the ground and are not intended to be retained.
- Plans produced in accordance with recommendations set out in BS 5837:2012 - Trees in Relation to Development and Construction.
- Survey based upon Aerial Photography and trees located by eye.

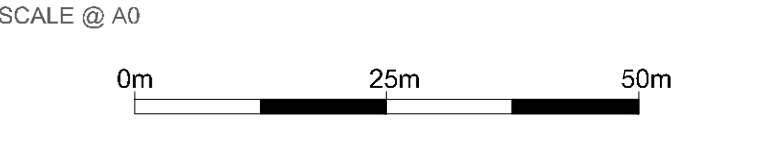


**Environmental Statement**

**DRAWING TITLE**  
**Airport Preliminary Vegetation Removal & Protection Plans**  
**Appendix 5.3.2 Annex 6**  
**Sheet 7 of 21**

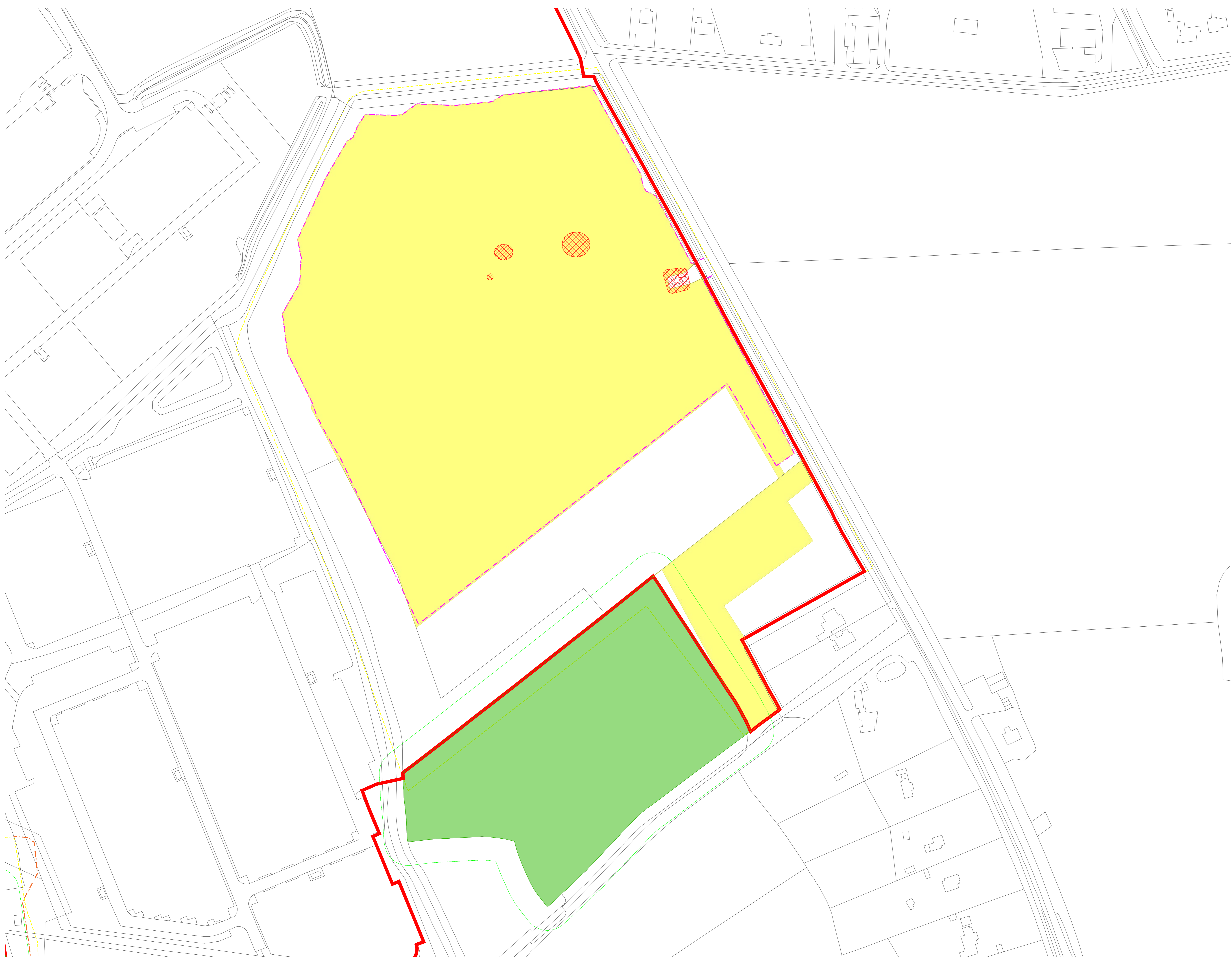
**DATE**  
**June 2024**

<b>ORIENTATION</b> N	<b>DRAWING NO.</b> 769	<b>REVISION</b> For ES Issue
	<b>DRAWN BY</b> RC	<b>PIA / CHECKED BY</b> DC



Reproduced from Ordnance Survey maps with the permission of Ordnance Survey on behalf of the controller of Her Majesty's Stationery Office © Crown Copyright (2023). Licence number 0100031673, 100048492.  
 © Copyright 2023 Gatwick Airport Limited. No part of this drawing is to be reproduced without prior permission of Gatwick Airport Limited.



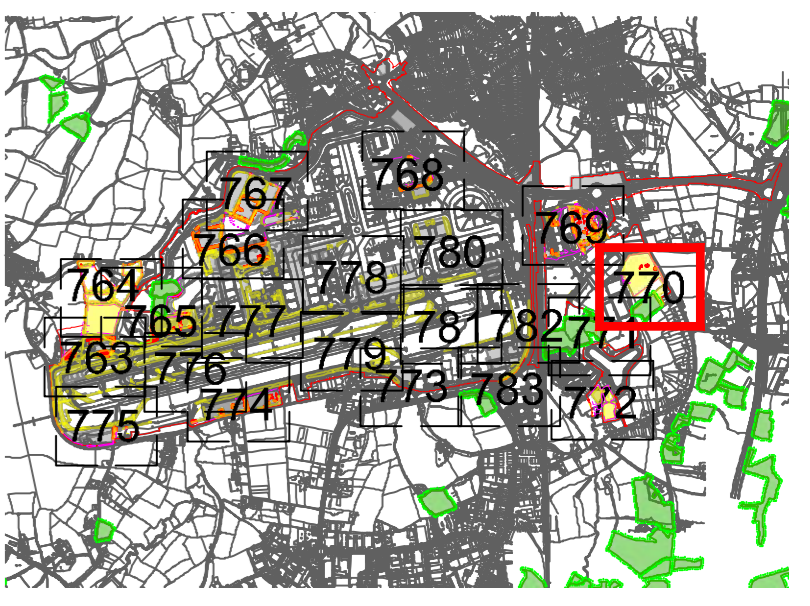


- Key**
- Site Boundary
  - Survey boundary
  - Projected Tree Loss (Worst Case Scenario)
  - Projected Vegetation Loss (Worst Case Scenario)
  - Indicative Scheme Layout
  - Indicative temporary protective fencing in accordance with Section 6.2 - BS5837:2012. See below for example barriers.
  - Indicative secondary protective Hi-Viz Mesh fence in accordance with Section 6.2 - BS5837:2012. See below for example barriers.
  - Indicative vegetation protective fence line. Design and location to be agreed by local council during detail design.
  - Designated Ancient Woodland (as per Natural England project woodland inventory, via open data publication)
  - Ancient Woodland tree buffer (15m offset) (as per standing advice produced by Forestry England and Natural England)

**NOTES:**

- Refer to ES Appendix 6.5.1: See Survey Report and Arboriculture Impact Assessment for further details.
- Some trees are a visual inspection from the ground and are not marked as a 3m offset buffer.
- Plan produced in accordance with recommendations set out in ES 5.3.2.1.1 - Trees in Relation to nearby overhead line construction.
- Surveys based upon Aerial Photography and trees located by eye.

**Key Plan**



**DOCUMENT**

**Environmental Statement**

**DRAWING TITLE**  
**Airport Preliminary Vegetation Removal & Protection Plans**  
**Appendix 5.3.2 Annex 6**  
**Sheet 8 of 21**

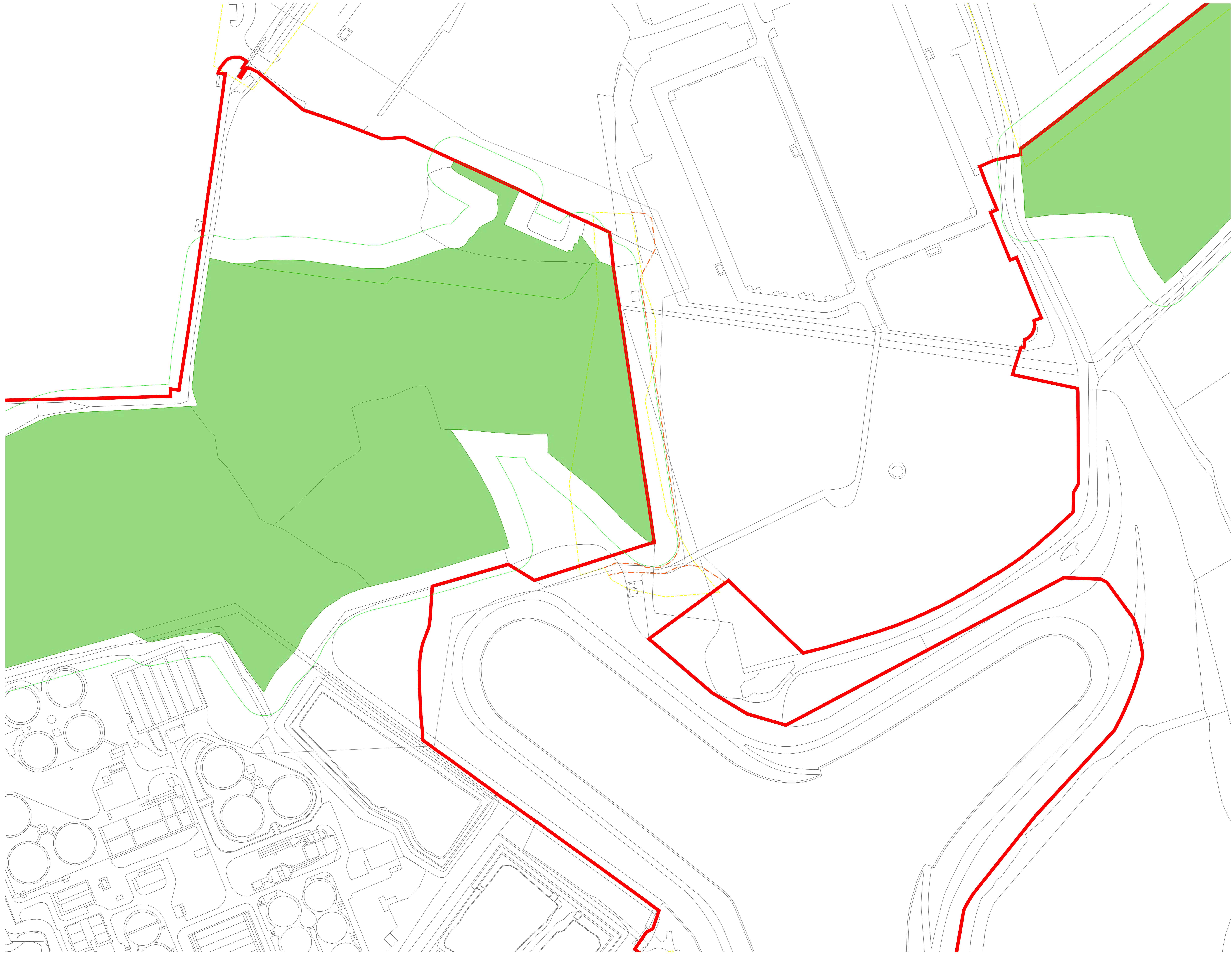
**DATE**  
 June 2024

<b>ORIENTATION</b> N ▲	DRAWING NO. <b>770</b>	REVISION <b>For ES Issue</b>
	DRAWN BY <b>RC</b>	PIA / CHECKED BY <b>DC</b>

**SCALE @ A0**  
 0m      25m      50m

Reproduced from Ordnance Survey map with the permission of Ordnance Survey on behalf of the controller of Her Majesty's Stationery Office © Crown Copyright (2023). Licence number 0100031073, 10001998, 100048492.  
 © Copyright 2023 Gatwick Airport Limited. No part of this drawing is to be reproduced without prior permission of Gatwick Airport Limited.





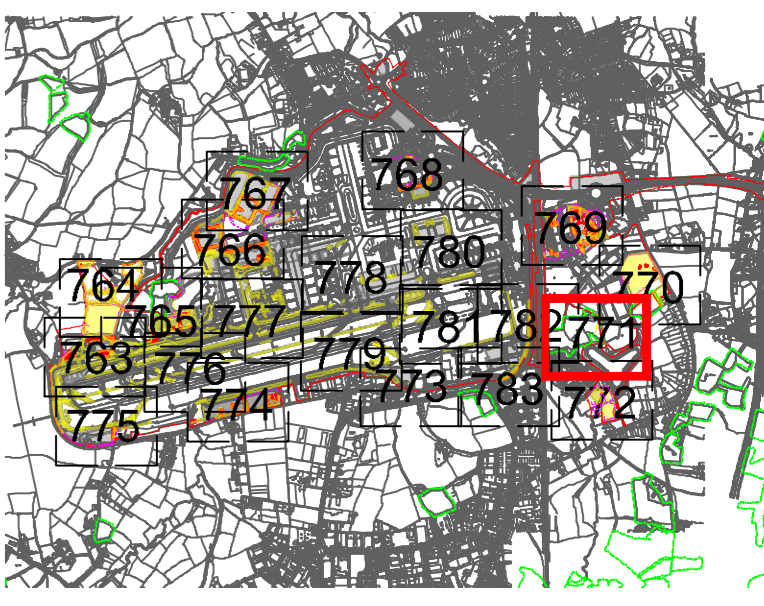
**Key**

- Site Boundary
- Survey boundary
- Projected Tree Loss (Worst Case Scenario)
- Projected Vegetation Loss (Worst Case Scenario)
- Indicative Scheme Layout
- Indicative temporary protective fence/line in accordance with Section 8.2.2, BS5837:2012. See below for example barriers.
- Indicative secondary protective H-Vis Mesh fence/line in accordance with Section 8.2.2, BS5837:2012. See below for example barriers.
- Indicative vegetation protective fence/line: Design and location to be agreed by local council during detail design.
- Designated Ancient Woodland (as per Natural England project woodland inventory, via open data publication)
- Ancient Woodland tree buffer (15m offset) (as per planning advice produced by Forestry England and Natural England)

**NOTES**

- Refer to ES Appendix 8.10.1: Tree Survey Report and Ancillary Impact Assessment for further details.
- Some trees or a small proportion from the ground and is not intended as a full aerial canopy footprint.
- Plans produced in accordance with recommendations set out in BS 5837:2012 - Trees in Relation to Development and Construction.
- Survey based upon Aerial Photography and trees located by eye.

**Key Plan**



**DOCUMENT**

**Environmental Statement**

**DRAWING TITLE**  
**Airport Preliminary Vegetation Removal & Protection Plans**  
**Appendix 5.3.2 Annex 6**  
**Sheet 9 of 21**

**DATE**  
**June 2024**




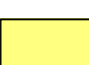


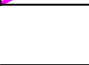
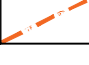
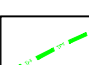

<b>ORIENTATION</b> N ▲	<b>DRAWING NO.</b> 771	<b>REVISION</b> For ES Issue
	<b>DRAWN BY</b> RC	<b>PIA / CHECKED BY</b> DC

**SCALE @ A0**  
 0m 25m 50m

Reproduced from Ordnance Survey map with the permission of Ordnance Survey on behalf of the controller of Her Majesty's Stationery Office © Crown Copyright (2023). Licence number 6100031073, 10004998, 100048492.  
 © Copyright 2023 Gatwick Airport Limited. No part of this drawing is to be reproduced without prior permission of Gatwick Airport Limited.

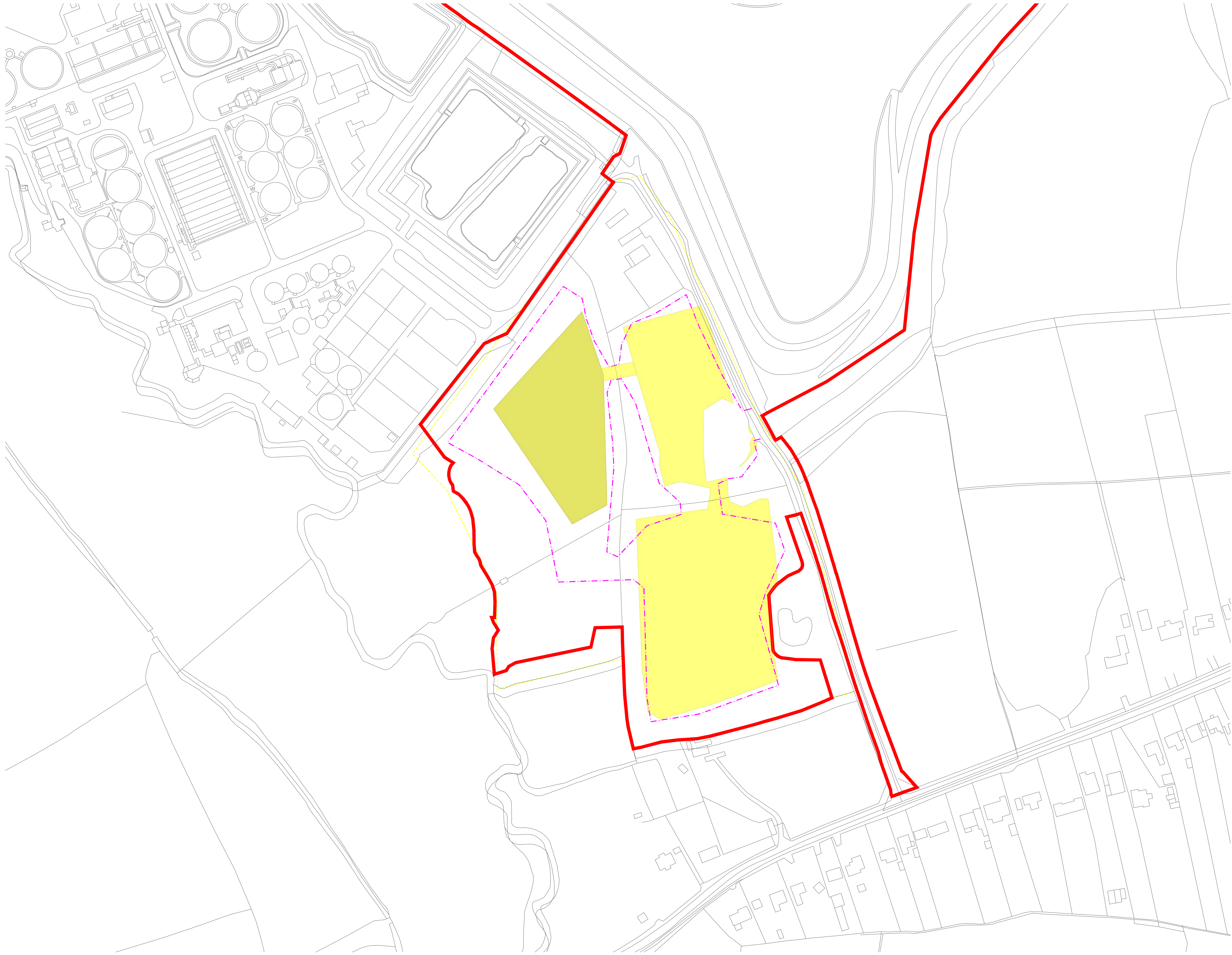


**Key**

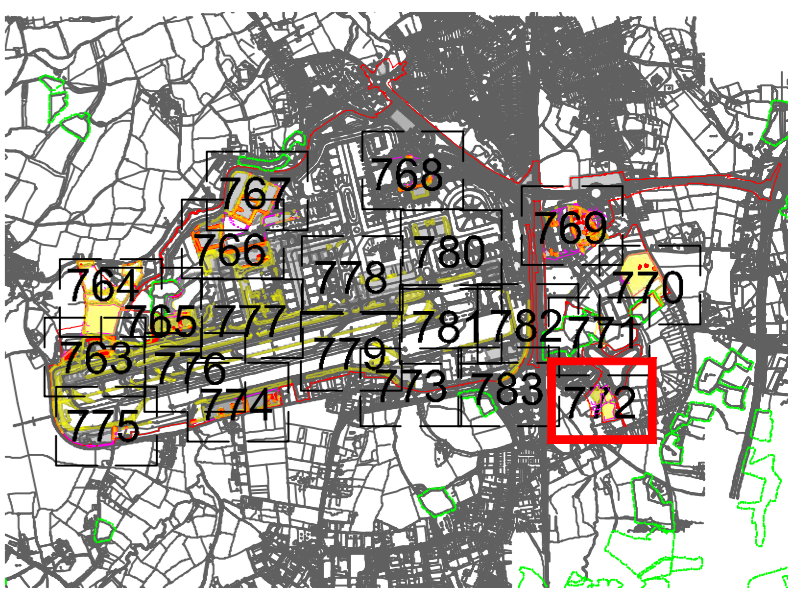
-  Site Boundary
-  Survey boundary
-  Projected Tree Loss (Worst Case Scenario)
-  Projected Vegetation Loss (Worst Case Scenario)
-  Indicative Scheme Layout
-  Indicative temporary protective fence/line in accordance with Section 6.2.2 BS5837:2012. See below for example barriers.
-  Indicative secondary protective Hi-Viz Mesh fence/line in accordance with Section 6.2.2 BS5837:2012. See below for example barriers.
-  Indicative vegetation protective fence/line. Design and location to be agreed by local council during detail design.
-  Designated Ancient Woodland (as per Natural England ancient woodland inventory, via open data publication)
-  Ancient Woodland tree buffer (15m offset) (as per planning advice produced by Forestry England and Natural England)

**NOTES**

- Refer to ES Appendix B 10.1: Tree Survey Report and Ancillary Impact Assessment for further details.
- Some trees or shrubs may not be shown on the ground and are not intended as a full aerial photograph.
- Plans produced in accordance with recommendations set out in BS 5837:2012 - Trees in Relation to Developments and Construction.
- Survey based upon Aerial Photography and trees browsed by eye.



**Key Plan**



**DOCUMENT**

**Environmental Statement**

**DRAWING TITLE**  
**Airport Preliminary Vegetation Removal & Protection Plans**  
**Appendix 5.3.2 Annex 6**  
**Sheet 10 of 21**

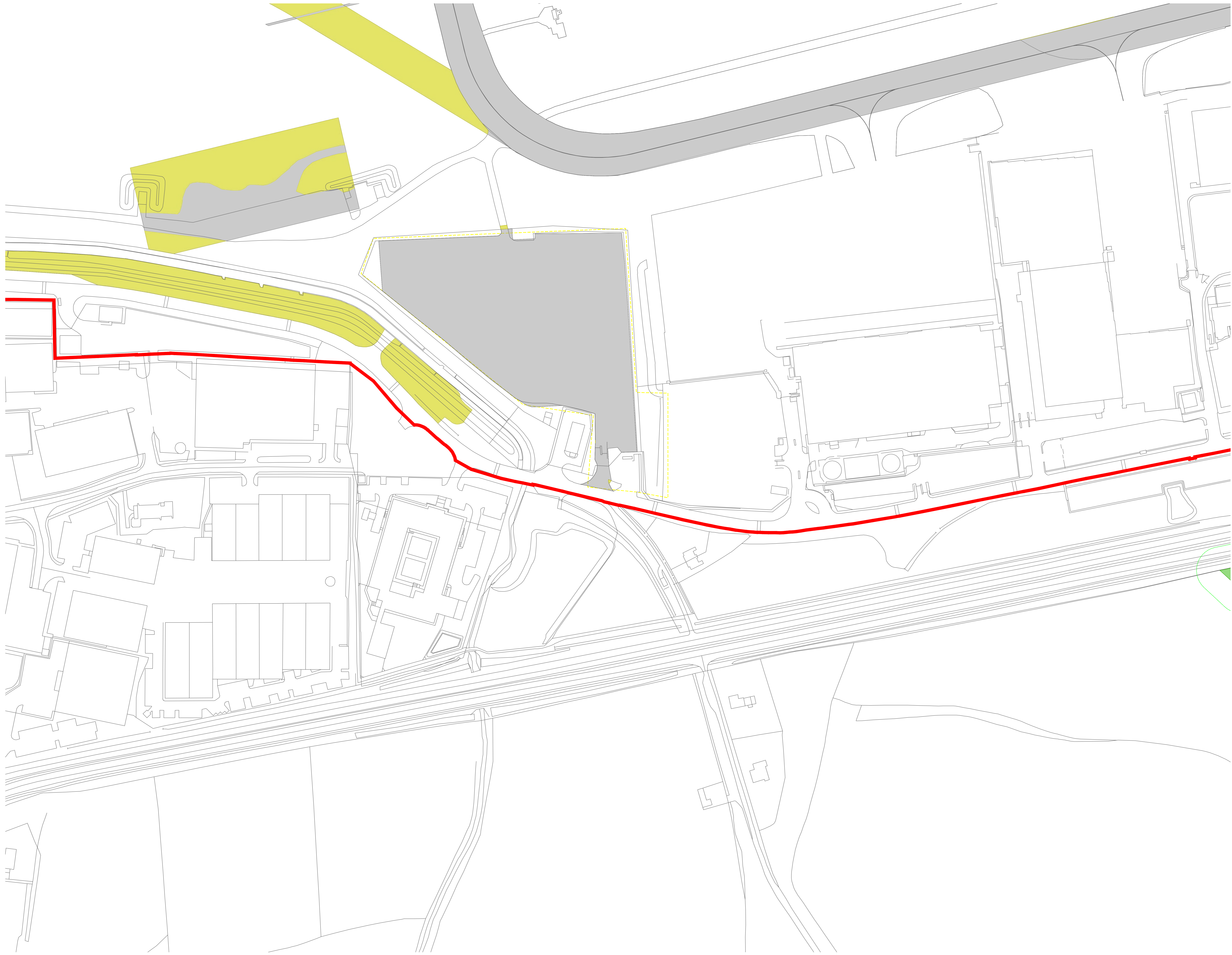
**DATE**  
**June 2024**

ORIENTATION	DRAWING NO.	REVISION
N	772	For ES Issue
	DRAWN BY	PIA / CHECKED BY
	RC	DC

**SCALE @ A0**  
 0m 25m 50m

Reproduced from Ordnance Survey map with the permission of Ordnance Survey on behalf of the controller of Her Majesty's Stationery Office © Crown Copyright (2023). Licence number 6100031073, 10004892.  
 © Copyright 2023 Gatwick Airport Limited. No part of this drawing is to be reproduced without prior permission of Gatwick Airport Limited.



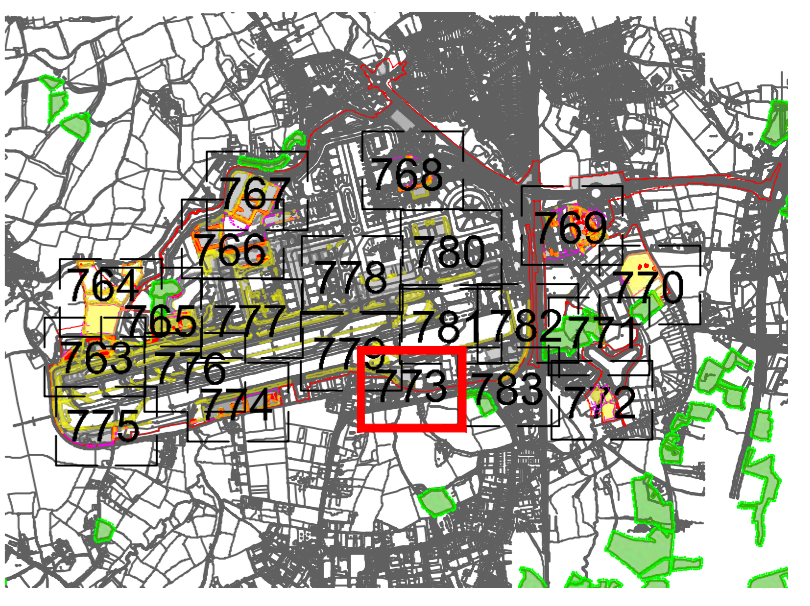


- Key**
- Site Boundary
  - Survey boundary
  - Projected Tree Loss (Worst Case Scenario)
  - Projected Vegetation Loss (Worst Case Scenario)
  - Indicative Scheme Layout
  - Indicative temporary protective fence/line in accordance with Section 6.2.2 - BS5837:2012. See below for example barriers.
  - Indicative secondary protective Hi-Vis Mesh fence/line in accordance with Section 6.2.2 - BS5837:2012. See below for example barriers.
  - Indicative vegetation protective fence/line: Design and location to be agreed by local council during detail design.
  - Designated Ancient Woodland (as per Natural England ancient woodland inventory - via open data publication)
  - Ancient Woodland tree buffer (15m offset) (as per planning advice produced by Forestry England and Natural England)

**NOTES**

- Refer to ES Appendix 6.10.1: Tree Survey Report and Ancillary Impact Assessment for further details.
- Some labels of visual receptors from the ground are not intended to be affected by the proposed works.
- Plans produced in accordance with recommendations set out in BS 5837:2012 - 'Trees in Relation to Development' - demolition and construction.
- Survey based upon Aerial Photography and trees located by eye.

**Key Plan**



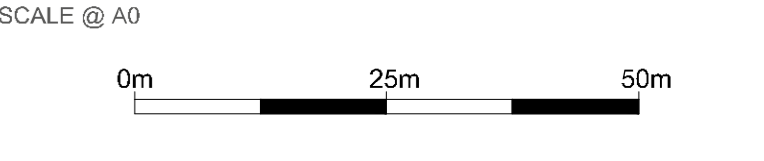
**DOCUMENT**

**Environmental Statement**

**DRAWING TITLE**  
**Airport Preliminary Vegetation Removal & Protection Plans**  
**Appendix 5.3.2 Annex 6**  
**Sheet 11 of 21**

**DATE**  
**June 2024**

<b>ORIENTATION</b> N ▲	<b>DRAWING NO.</b> 773	<b>REVISION</b> For ES Issue
	<b>DRAWN BY</b> RC	<b>PIA / CHECKED BY</b> DC



Reproduced from Ordnance Survey maps with the permission of Ordnance Survey on behalf of the controller of Her Majesty's Stationery Office © Crown Copyright (2023). Licence number 0100031673, 100048492, 100048492.  
 © Copyright 2023 Gatwick Airport Limited. No part of this drawing is to be reproduced without prior permission of Gatwick Airport Limited.



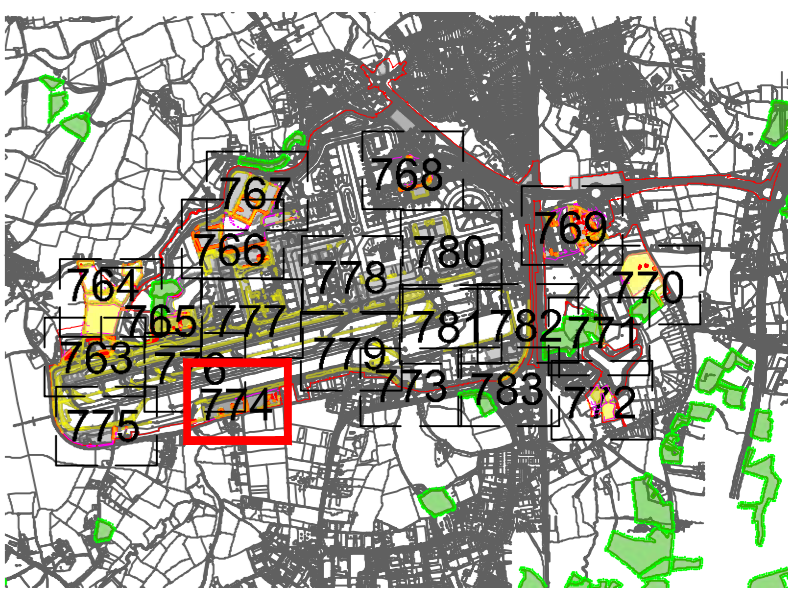


- Key**
- Site Boundary
  - Survey boundary
  - Projected Tree Loss (Worst Case Scenario)
  - Projected Vegetation Loss (Worst Case Scenario)
  - Indicative Scheme Layout
  - Indicative temporary protective fence/line in accordance with Section 6.2.2, BS5837:2012. See below for example barriers.
  - Indicative secondary protective H-Vis Mesh fence/line in accordance with Section 6.2.2, BS5837:2012. See below for example barriers.
  - Indicative vegetation protective fence/line. Design and location to be agreed by local council during detail design.
  - Designated Ancient Woodland (as per Natural England ancient woodland inventory, via open data publication)
  - Ancient Woodland tree buffer (15m offset) (as per planning advice produced by Forestry England and Natural England)

**NOTES**

- Refer to ES Appendix 6.10.1: Tree Survey Report and Ancillary Impact Assessment for further details.
- Some trees are shown as not in contact with the ground and are not included in the above calculations.
- Plans produced in accordance with recommendations set out in BS 5837:2012 - Trees in Relation to Development and Construction.
- Survey based upon Aerial Photography and trees located by eye.

**Key Plan**

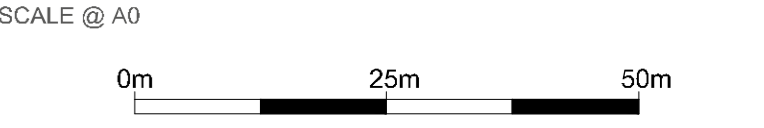


**Environmental Statement**

**DRAWING TITLE**  
**Airport Preliminary Vegetation Removal & Protection Plans**  
**Appendix 5.3.2 Annex 6**  
**Sheet 12 of 21**

**DATE**  
**June 2024**

<b>ORIENTATION</b> N	<b>DRAWING NO.</b> 774	<b>REVISION</b> For ES Issue
	<b>DRAWN BY</b> RC	<b>PIA / CHECKED BY</b> DC



Reproduced from Ordnance Survey maps with the permission of Ordnance Survey on behalf of the controller of Her Majesty's Stationery Office © Crown Copyright (2023). Licence number 0100031673, 10001998, 100048492.  
 © Copyright 2023 Gatwick Airport Limited. No part of this drawing is to be reproduced without prior permission of Gatwick Airport Limited.